

APOLLO  
COLOGNY RUTH







# Content

Project	4
Location	24
Floor Plans	25
Villa Apollo	28
Cross Sections	34
Facades (East / West)	36
Facades (North / South)	38
Landscape Design	40
Contact	42

# The Project

**Apollo's** architecture is a paradigmatic typology belonging to a concrete moment, unlimited in its evolution, always open to investigation. The field of experimentation can hardly be said to be narrow and embraces both the use of materials and the use of the space itself.

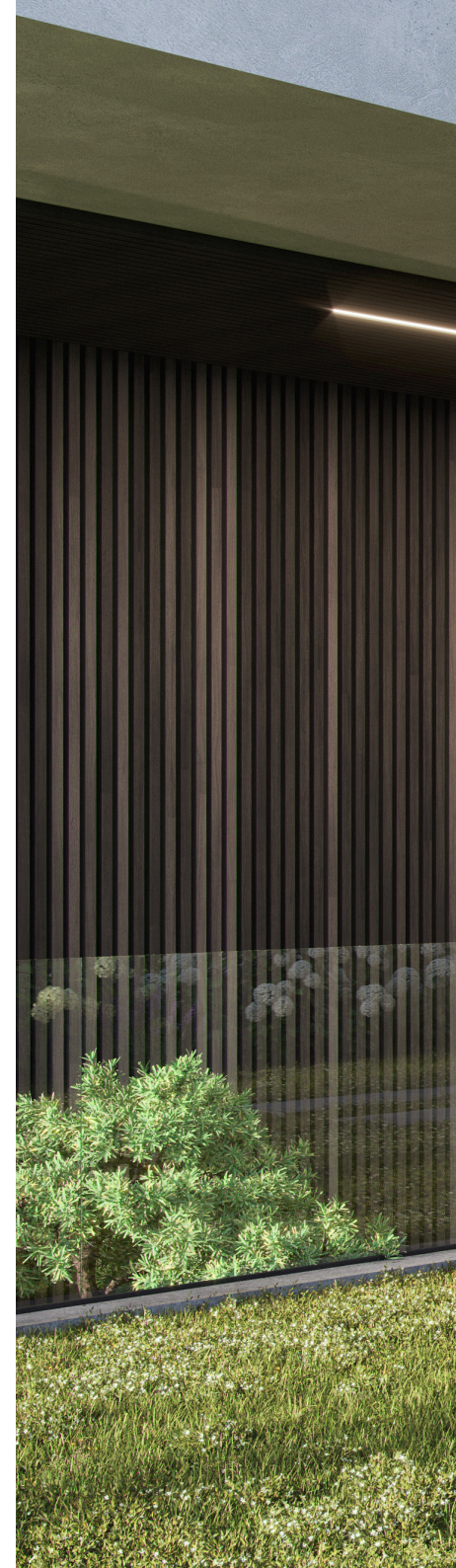
Perched on a hill above Lake Geneva, Apollo is designed to blend interiors into exteriors by including numerous outdoor terraces on different levels that exploit the astounding views. It uses to the full the quality of light in its lakeside location bringing it inside to the very core of the structure by the most unusual and innovative means.

The villa is orientated towards the lake, so that the water scape can be observed away from the sun's glare. Whilst one of the most important elements in the design of this project is a large glass opening that runs under and parallel to the whole length of the roof letting the light defuse through the building, it is the extensive floor-to-ceiling panes of glass on the front side that are the main feature and frame the views.

Apollo combines conventional living spaces and more informal loft style layout better suited to modern family life. The interior is arranged over four floors linked by a glass elevator.

The main entrance on the ground floor overlooks a large wooded garden and is well isolated from the many outside entertainment areas which are to be found on this level. It is greatly enhanced by the presence of a magnificent Zen style water lily pond.

An enormous glass door opens to invite you to discover architecturally exciting and challenging interiors with its breath taking triple height atrium. The atrium embraces a specially designed floating staircase which is made of lace like laser perforated metal that creates an almost unrealistic impression of walking on air.







A custom designed library runs along the height of three levels totaling approximately 10 meters. A huge, but at the same time a discreet dressing has a very elaborated storage design that significantly increases it's capacity.

A large executive home office ensures total privacy and the possibility to receive visitors without introducing them into the private family quarters. If required, this space can be easily transformed into an additional bedroom with its own en-suite bathroom. An independent powder room is also on this floor.









The outdoor living with its vast covered area makes this project distinct. A south facing outdoor swimming pool with its own beach terrace provides intimacy and enables total relaxation offering a spectacular lake view at sunset. A custom designed sky protected summer entertainer's kitchen includes a bar area opening towards a more formal outside dining facilities that would definitely impress your guests with a majestic lake panorama. A split level separates this space from secluded sitting quarters that benefit from a well-integrated fire place and letting you fully enjoy any activities that you are used to do inside should it be reading a book, watching TV or allow you to make the most of family time or with friends with no regard to what the weather has in stall.



The principal upper floor of the villa resembles a suspended platform and is organized on a longitudinal plan, which develops parallel to the curves of the lake and faces the view. The lake faced façade consists of a continuous 3.5m high layer of glass, which captures the best possible settings of the landscape from all the principal areas. A very big and luxurious chef's kitchen is separated from a formal dining area as well as from a magnificent living room which includes a fire place with all custom made inbuilt furniture specifically conceived for this space by the architect and interior designer.



A spectacular terrace overlooking the lake is accessible from all main areas and provides a vast additional outdoor space ideal for receptions and parties.









An expansive primary suite (around 70m<sup>2</sup>) also benefits from stunning views as well as an access to the terrace. Its magnificent double (his and hers) bathroom would definitely impress any of the most choosy customers with its exceptional finishes. A boutique style walk-in closet guarantees you the utmost comfort. There are also two additional suites on this level with their own private terrace as well as an independent powder room.











A carefully thought-out floor plan of the lower level provides unmatched privacy. A separate access gives this floor the possibility to function independently from the rest of the villa. The dynamism of this space is represented by a spectacular play on volumes along with prestigious and exceptional finishes creating harmonious and balanced perspectives. An expansive sunken Family room (40m<sup>2</sup>) with its outstanding bespoke furniture benefits from the access to a beautiful patio embellished by a green wall with an exceptional variety of plants.



A glass enclosed wine storage is defined to be a central feature of this level and can be observed from all areas.

This floor also invites you to discover a luxury SPA and wellness area with an indoor swimming pool which includes a Jacuzzi element. There is also a sauna, a hammam as well as a fully equipped fitness area.

Two additional guest suites open onto large patios along with another separate powder room as well as fully equipped laundry room complete this level.







The underground level is represented by a secondary entrance to the villa with its dressing area and is accessible by an elevator or a separate staircase.

The capacity of a secured private subterranean garage is increased up to 7 cars, including electric, thanks to a car dock turntable that also ensures easy parking. The garage provides multiple places for motorbikes as well as bicycles and ebikes.

The technical room has its separate outside access door, enabling all necessary services to be provided without entering the villa and disturbing your privacy.

The philosophy of the project is to guarantee you an exceptional living environment represented by the combination of quality and innovation. A very distinctive snow white pigment blended exposed concrete façade will stand the test of time. The construction corresponds to the highest energy standards (THPE) that includes a geothermic system welcoming a cooling option so much appreciated today with regards to the rising number of unreasonably hot summers in recent years in Geneva.

Running ahead and predicting the future Apollo is an ultimate realization of the very best contemporary architecture which is there to serve you and your way of living.

# Location

The lake side commune of Cologny is the most reputable and distinguished in Geneva offering you an exceptional location.

It is one of the more prosperous suburbs featuring an abundance of superbly finished and presented homes. The area provides a calm and composed environment just a stones throw away from the commotion of daily life. It has broad leafy streets and majestic views over lake Lemman whilst being a short distance from the city.

The project sits on a spectacular piece of land offering you a jetliner panoramic view looking over the lake. Having an exceptional advantage of double access, Apollo gives you one of the most internationally recognizable addresses as well as the benefit of proximity to public transport ensuring just a quick ride to Geneva city centre.

Cologny enjoys numerous highly rated cafes and restaurants as well as some well-known and significant cultural sites such as the villa Diodati, the World Economic Forum and the Bodmer Foundation.

It is ideally placed for easy reach to some of the best international schools in the city (the International School Grand-Boissier, Notre Dame du Lac, Ecole Moser and the Montessori school).

The area has an abundance of leisure and activities. Its cultural offering stands out with events, theatre or concerts all year long and for all ages.

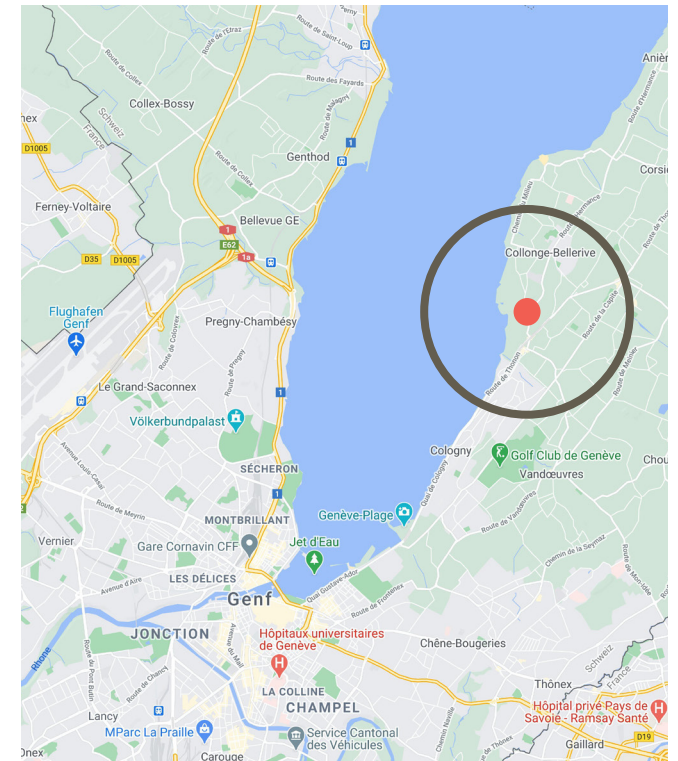
Sports aficionados will delight in having the Cologny Sport Centre close by with its tennis, squash, badminton and climbing facilities.

For golf lovers, there is the well-known Geneva Golf Club and for sailors the Yacht Club as well as le Société Nautique de Genève are at your disposal.

Well liked with equestrians, La Pallanterie horse riding school offers group and private courses as well as the possibility of stabling.

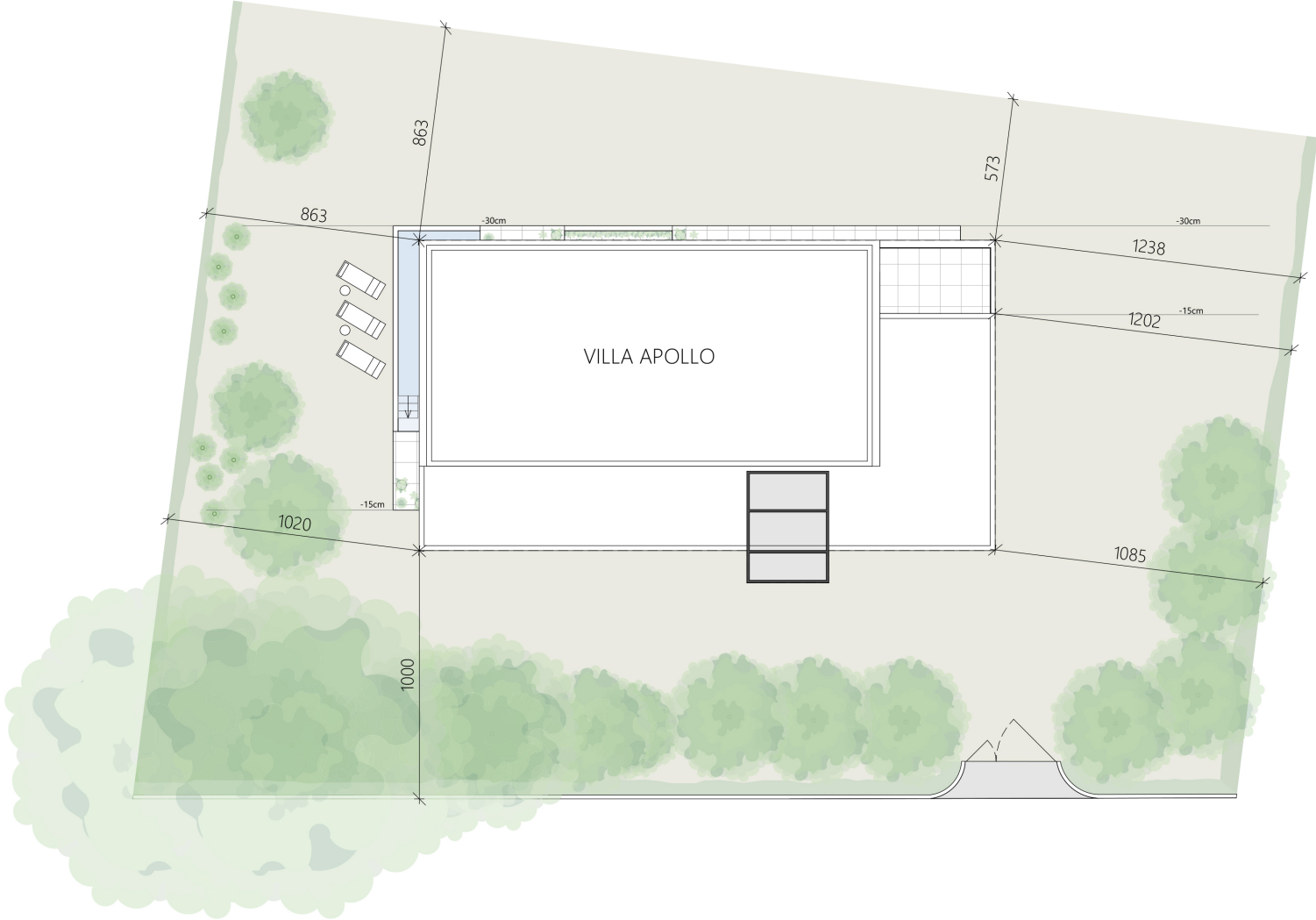
For total indulgence and dalliance, Le Bain Blue Hammam and Spa is to be found right on the lake side.

Conducive to your every day comfort and convenience there are plenty of shops, pharmacies, hairdressers to be found just close by, all on hand and in easy reach just around the corner.





# Floor Plan







# Villa Apollo

---

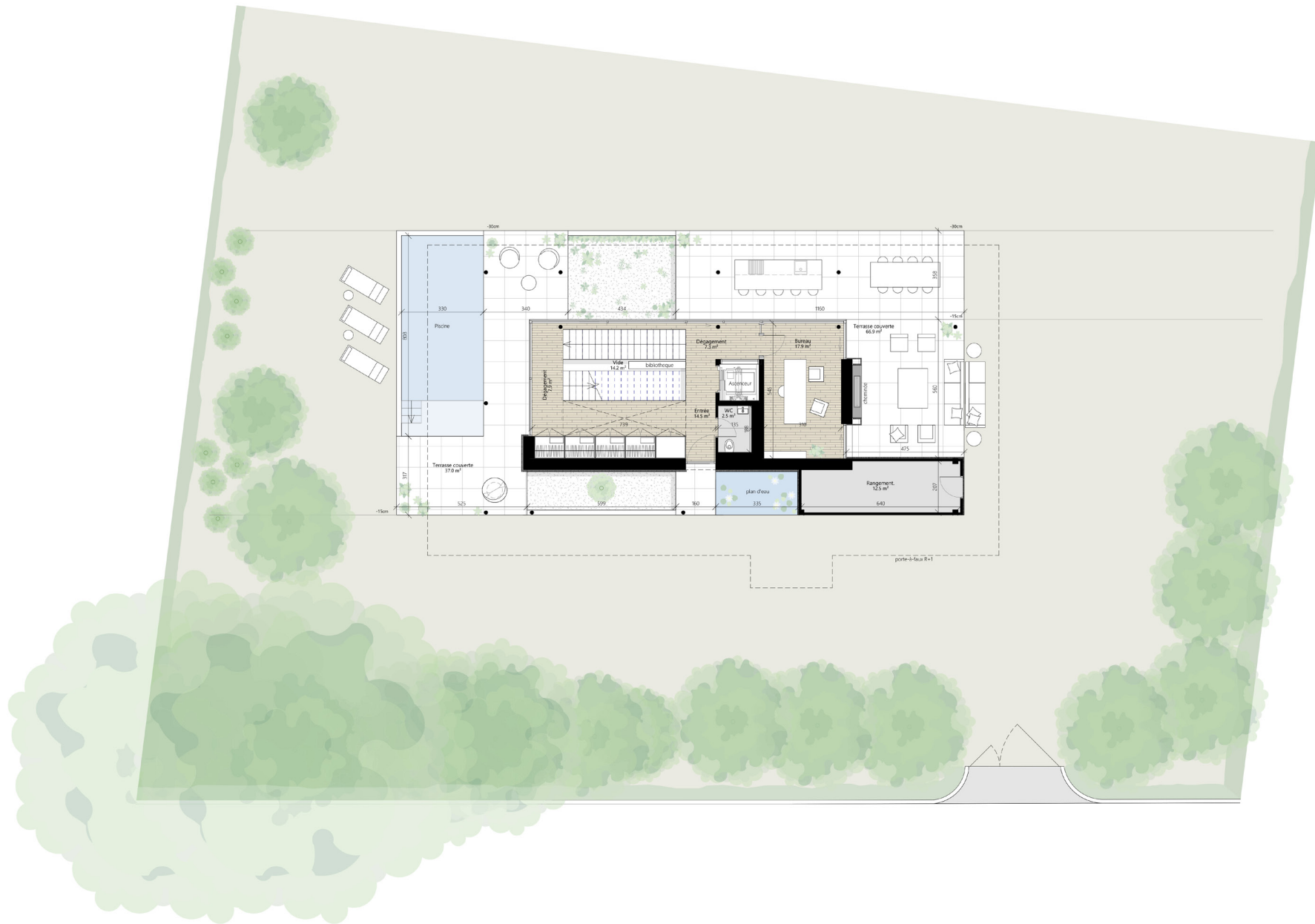
Floors	4
Rooms	12
Parking	7
Interior swimming pool	1
Exterior swimming pool	1

Available space	625.0 m <sup>2</sup>
Patios	26.6 m <sup>2</sup>
Gardens	1 096.3 m <sup>2</sup>
Terraces	133.3 m <sup>2</sup>
Land	1 202.0 m <sup>2</sup>

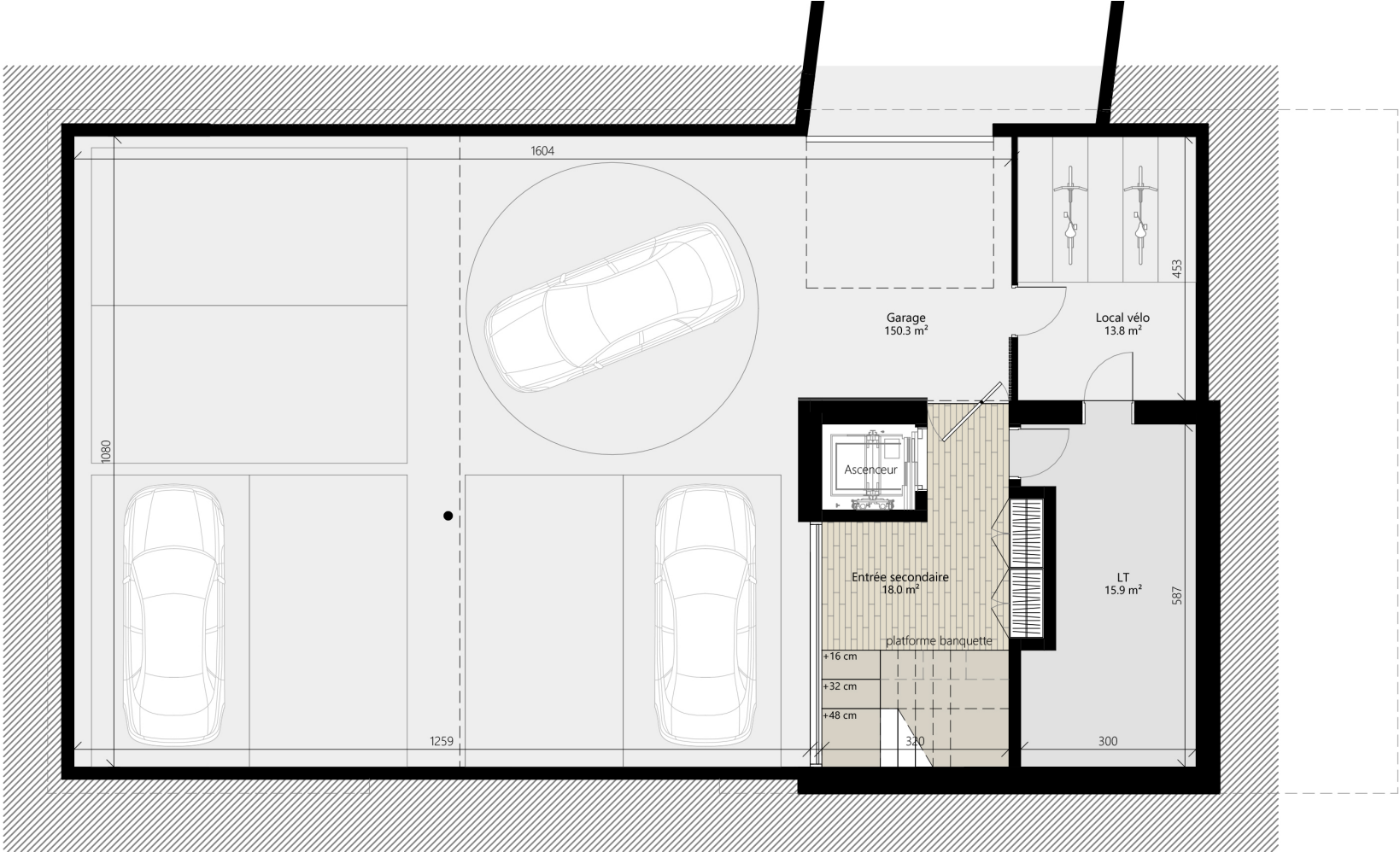
---



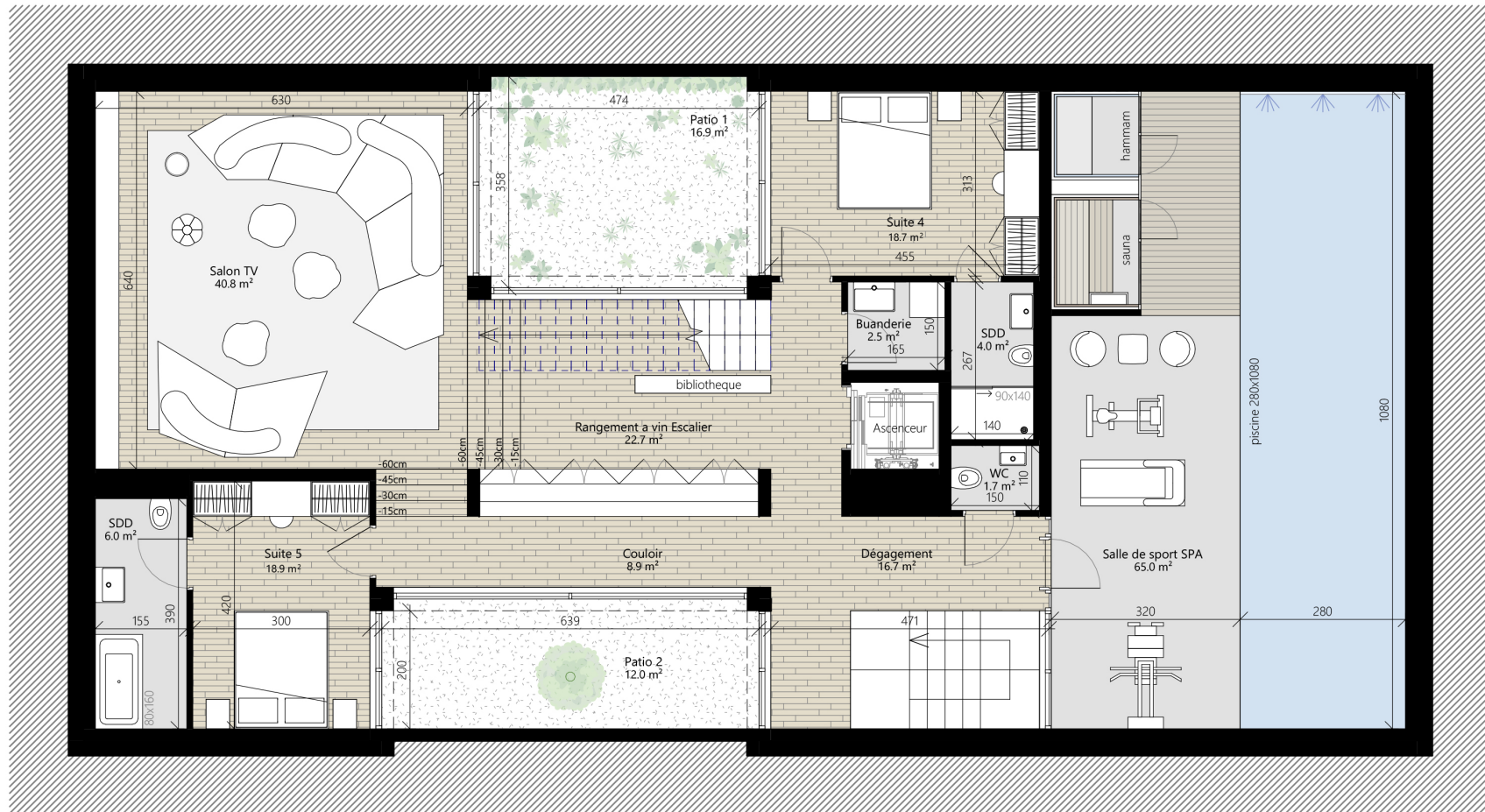
# Land



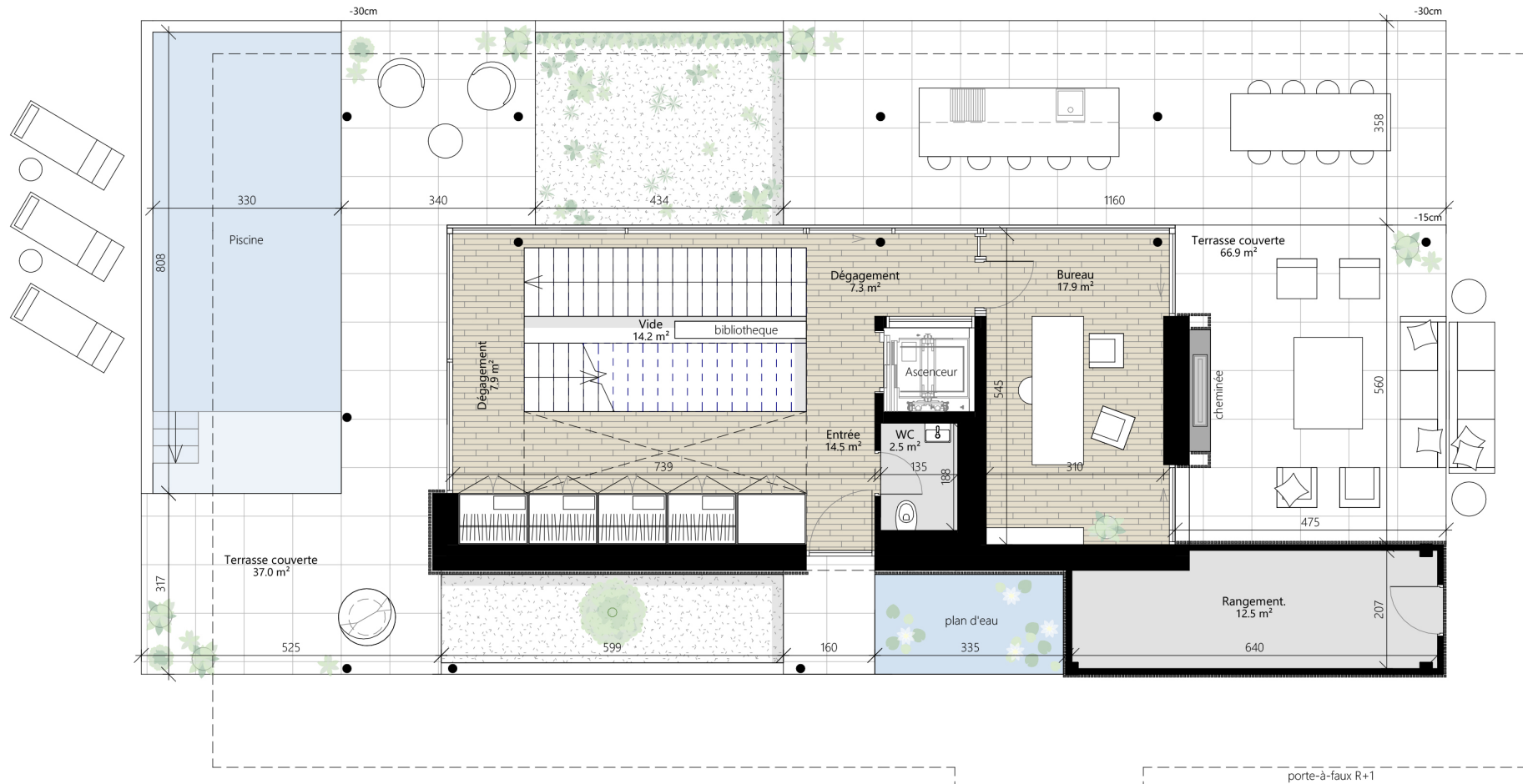
# Subterrain Private Garage



# Lower Level



# Garden Level

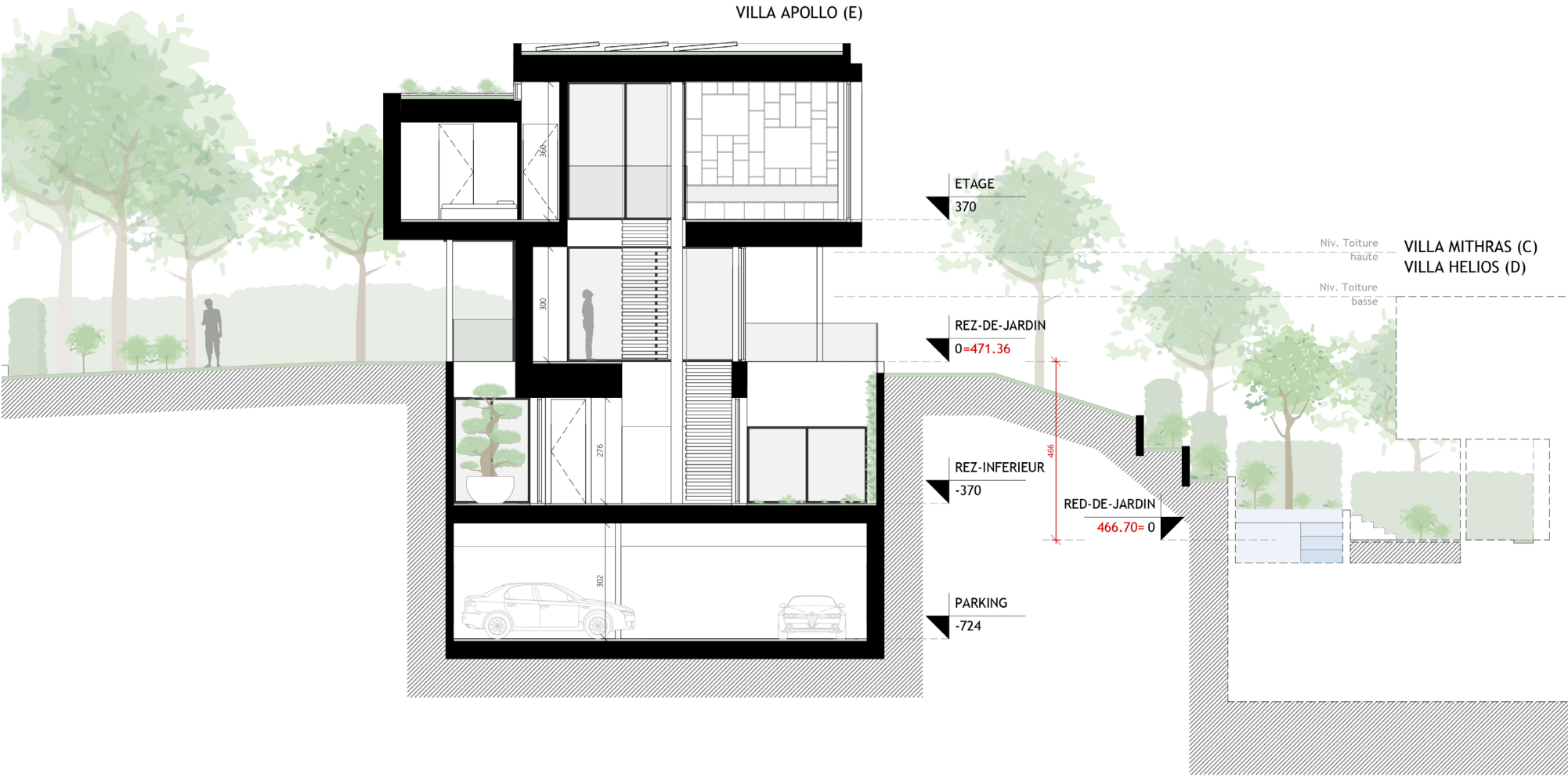




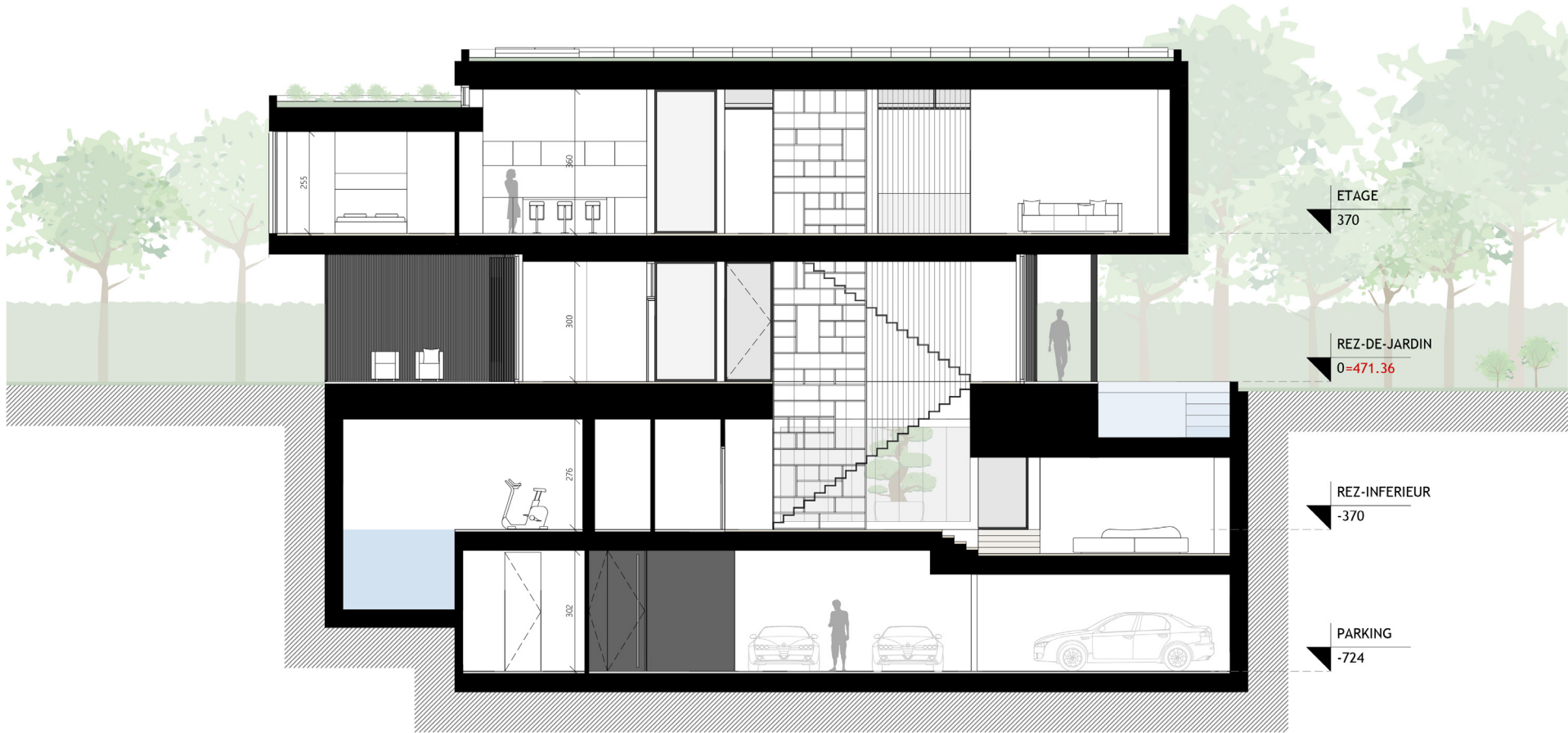
# Main Level



# Cross Section



# Cross Section

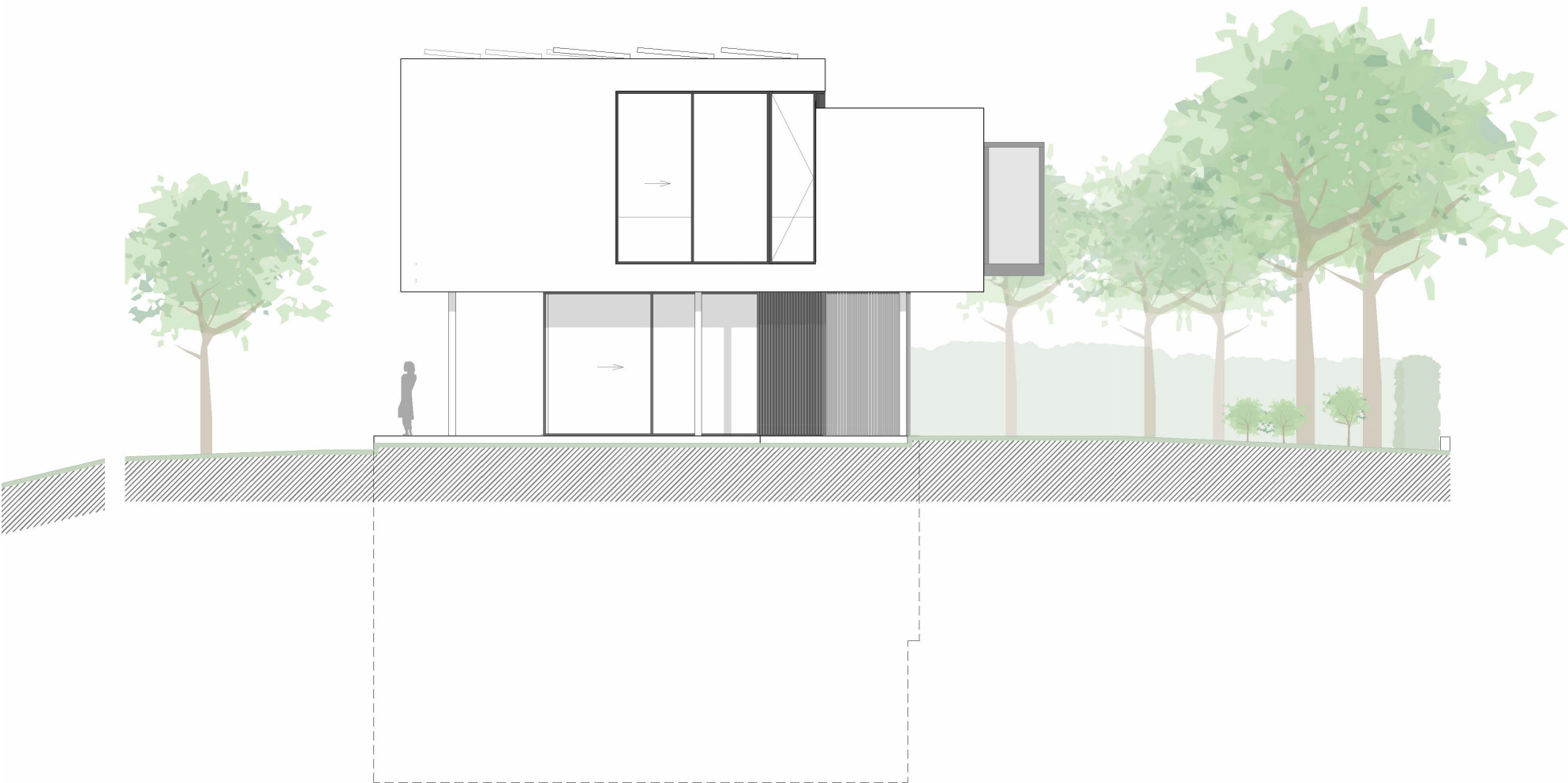


# Facades EAST

EAST



# Facades WEST



# Facades NORTH



# Facades SOUTH



# Landscape Design

The front yard is defined by a large wooded garden that is well isolated from the outside world by an acoustic vegetation wall. Lines of trees allow for privacy while still making the space feel open.

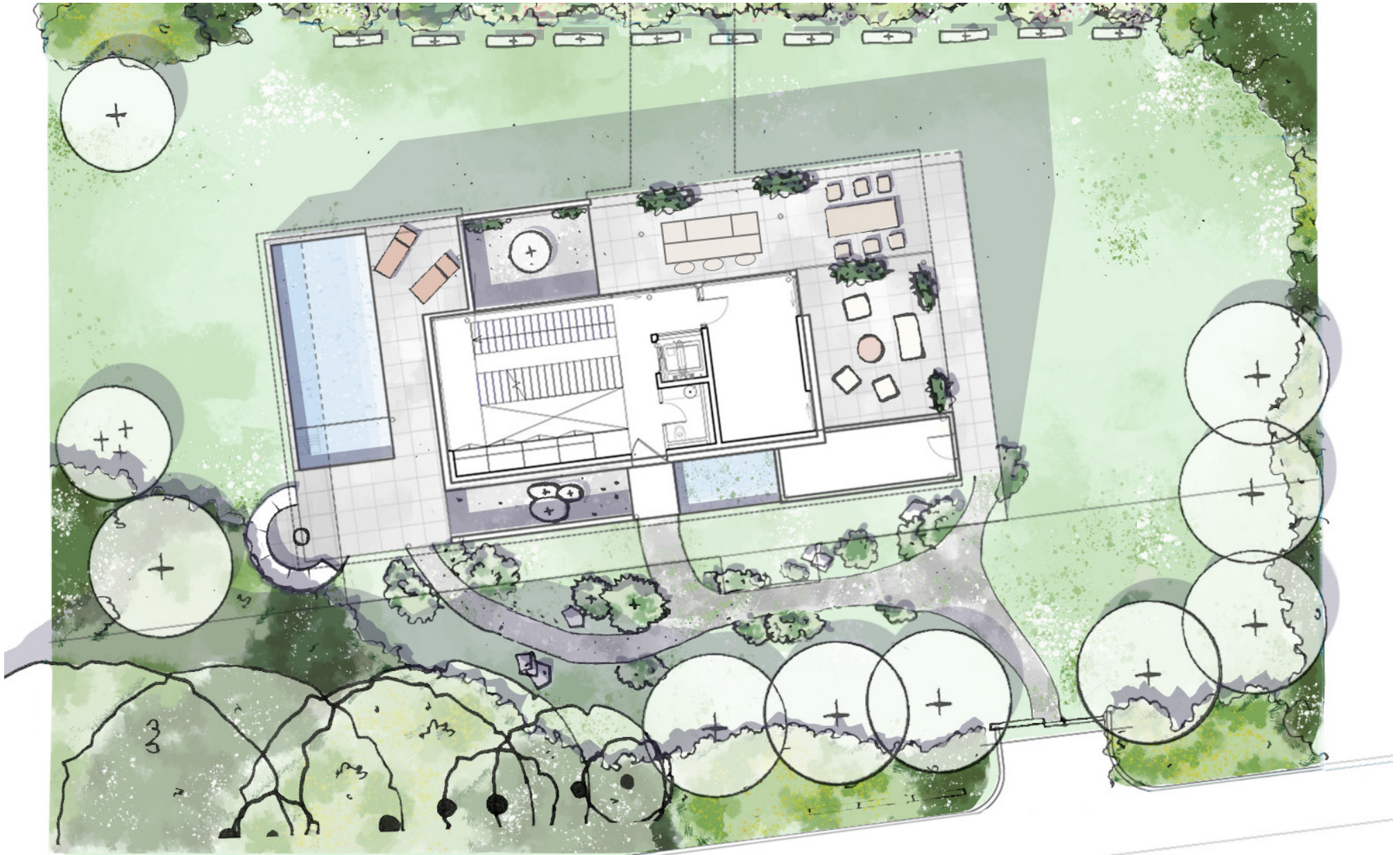
A Zen style pond at the main entrance does not miss an opportunity to create a stunning first impression.

Apollo's contemporary landscape is suited to welcoming an indoor-outdoor lifestyle.

The design is conceived as a sequence of rooms, each with its own specific atmosphere and sense of place. Moving within and between the different spaces of the garden offers encounters not only with a variety of planting, but also with contrasting expressions of perspective, proportion, volume, rhythm and light.







# Contact

## LA STRADA PROPERTIES

2 Allée Pic-Pic

1203 Genève

+41 22 758 03 25

[info@apollo-cogny.ch](mailto:info@apollo-cogny.ch)

[www.apollo-cogny.ch](http://www.apollo-cogny.ch)



Copyright © La Strada Properties.

The information, renderings and images that you consult  
Only the notarial contract is authentic.



in this brochure have a purely informative value and are not contractual.

**LA STRADA PROPERTIES**



**APOLLO**  
COLOGNY RUTH